

# OVER AND UNDER SHOTGUN

## USER'S MANUAL



WARNING: READ THE INSTRUCTIONS AND SAFETY PRECAUTIONS IN THIS MANUAL CAREFULLY BEFORE USING THE FIREARM.



# ROCK ISLAND ARMORY

## USER'S MANUAL OVER AND UNDER SHOTGUN

### SAFETY, INSTRUCTION AND PARTS MANUAL



As a responsible owner of this firearm, you must read the instructions and warnings in this manual carefully. Before using this firearm, make sure you understand thoroughly the contents of this manual.

This manual must always be in the firearm's carrying case whenever the owner/user brings it or when it transfers ownership. A copy of this manual is available upon request from:

*ARMSCOR PRECISION INTERNATIONAL  
150 N Smart Way, Pahrump NV 89060  
E-mail: [support@armscor.com](mailto:support@armscor.com)*

# TABLE OF CONTENTS

- 1 Statement of Liability
- 1 State-By-State Warnings
- 2 Safety Precautions

## HEALTH & SAFETY

- 3 Tech Specs
- 4 Basic Parts
- 5 Exploded Views

## ABOUT THE FIREARM

- Operating Instructions 6
  - Assembly.....6
  - Loading and Operating Your Shotgun.....7
  - Disassembly.....8
  - Usage of Choke Tubes.....8
  - Importante Usage of Steel Shot.....8

- Maintenance and Cleaning 9

- Storage 9

- Storage and Transportation 10

- Ordering Parts 11

- Warranty 12

- Notes 13

## MAINTENANCE



# 01 | STATEMENT OF LIABILITY

## STATEMENT OF LIABILITY

This shotgun is classified as a firearm or dangerous weapon. It is expressly understood that we assume no liability for its resale or unsafe handling under local laws and regulations. Armscor assumes no responsibility for physical injury or property damage resulting from either intentional or accidental discharge, or for the function of the firearm subjected to influence beyond their control. Armscor will honor no claims which may result from careless handling, unauthorized adjustments, defective or improper ammunition, corrosion or neglect. Examine your firearm carefully at the time of purchase. It should be forwarded immediately to the factory or its sales agent if any adjustment of any kind of required.

### State-By-State Warnings



#### CALIFORNIA STATE WARNING

*CHILDREN ARE ATTRACTED TO AND CAN OPERATE FIREARMS THAT CAN CAUSE SEVERE INJURIES OR DEATH. PREVENT CHILD ACCESS BY ALWAYS KEEPING FIREARMS LOCKED AWAY AND UNLOADED WHEN NOT IN USE. IF YOU KEEP A LOADED FIREARM WHERE A CHILD OBTAINS AND IMPROPERLY USES IT, YOU MAY BE FINED OR SENT TO PRISON. IT IS UNLAWFUL TO USE A MAGAZINE WITH A CAPACITY OVER 10 ROUNDS.*



#### MASSACHUSETTS STATE WARNING

*IT IS UNLAWFUL TO CARRY ANY MAGAZINE OR BELT WHICH HOLDS MORE THAN TEN ROUNDS, UNLESS AUTHORITY IS GRANTED BY THE BOSTON POLICE COMMISSIONER. IT IS UNLAWFUL TO STORE OR KEEP A FIREARM, RIFLE, SHOTGUN OR MACHINE GUN IN ANY PLACE UNLESS THAT WEAPON IS EQUIPPED WITH A TAMPER RESISTANT SAFETY DEVICE OR IS STORED OR KEPT IN A SECURELY LOCKED CONTAINER.*



#### NEW YORK STATE WARNING

*IT IS UNLAWFUL TO CARRY ANY MAGAZINE OR BELT WHICH HOLDS MORE THAN SEVEN ROUNDS, UNLESS AUTHORITY IS GRANTED BY THE STATE OF NEW YORK. THE USE OF A LOCKING DEVICE OR SAFETY LOCK IS ONLY ONE ASPECT OF RESPONSIBLE FIREARMS STORAGE FOR INCREASED SAFETY, FIREARMS SHOULD BE STORED UNLOADED AND LOCKED IN A LOCATION THAT IS BOTH SEPARATED FROM THEIR AMMUNITION AND INACCESSIBLE TO CHILDREN AND OTHER UNAUTHORIZED PERSONS.*

## 02 | SAFETY PRECAUTIONS

Safety must be the first and constant consideration of every person who handles firearms and ammunition. The person with a firearm in his possession has an important responsibility. He/she must know how to use his/her firearm safely:

1. Always keep the muzzle pointed at a safe direction. Watch the muzzle at all time: never point a gun, accidentally or intentionally, at any person or anything you do not intend to shoot. Identify the target before shooting; do not shoot at sounds.
2. Always treat a gun as if it is loaded – it may be!
3. Keep your finger off the trigger while operating the action and at all other times until you are ready to shoot.
4. Keep the safety “on” or in the “safe” position at all times until you are ready to fire. Do not rely on your gun’s safety, the safety on any gun is a mechanical device and is not intended as a substitute for common sense or safe gun handling.
5. Learn how your gun functions and handles. If you do not thoroughly understand the proper use and care of your gun, seek the advice of someone who is knowledgeable.
6. Do not alter or modify any part of the firearm.
7. Store guns unloaded, separate from any ammunition, and out of the reach of children.
8. Be sure the barrels is clear of any obstructions before loading. Make it a habit to check the barrel every time before loading.
9. Be sure you have and use the proper ammunition. A 20 gauge shell will enter a 12 gauge chamber far enough so that a 12 gauge shell can be loaded behind it. Also, a 3 inch shell may fit into a 2  $\frac{3}{4}$  inch chamber, but the crimp at the mouth of the shell will unfold into the forcing cone. If either of these things occur and you fire the gun, the gun will explode, damaging the gun and possibly causing serious injury or death to you and those around you.
10. Wear protective shooting glasses and adequate ear protection when shooting.
11. Never climb or jump over anything, such as a tree, fence, or ditch, with a loaded gun. Open the barrel, remove the shells and hand the gun to someone else or place it on the ground on the other side of the obstacle before crossing it yourself. Do not lean a gun against a tree or other object; it could fall and possibly discharge.
12. Do not shoot at a hard surface or at water. Bullet shot can ricochet or bounce off and travel in unpredictable directions with great velocity.
13. Never transport a loaded gun. Do not place a loaded gun into a vehicle. The gun should be unloaded and placed into a case when not in use.
14. Never drink alcoholic beverages before or during shooting.

### **WARNING:**

*DO NOT ATTEMPT TO USE ANY FIREARM WITHOUT HAVING A COMPLETE UNDERSTANDING OF ITS PARTICULAR CHARACTERISTICS AND SAFE USE.*

### **WARNING:**

*YOU SHOULD NEVER DEPEND ON A SAFETY MECHANISM OR ANY OTHER MECHANICAL DEVICE TO JUSTIFY CARELESS AND IMPROPER HANDLING.*

### **WARNING:**

*THIS FIREARM WAS MANUFACTURED TO PERFORM PROPERLY WITH THE ORIGINAL PARTS AS DESIGNED. PLEASE MAKE SURE ANY PARTS YOU BUY ARE INSTALLED CORRECTLY AND THAT NEITHER REPLACEMENTS NOR ORIGINALS ARE ALTERED OR CHANGED. PUTTING A FIREARM TOGETHER INCORRECTLY OR WITH MODIFIED PARTS CAN RESULT IN DAMAGED FIREARM, DANGER, AND INJURY OR DEATH. ANY MODIFICATIONS TO FIREARM WILL VOID FACTORY WARRANTY.*

## 03 | TECH SPECS

|                |   |
|----------------|---|
| Model          | Derya O/U   |
| Caliber        | 12 Gauge  |
| Chamber        | 2.75in / 3in  |
| Action         | Over and Under  |
| Capacity       | 1 + 1 Rounds  |
| Choke          | Full, Modified, and Improved Cylinder                   |
| Barrel         | Contoured   |
| Barrel Length  | 710mm / 28in  |
| Overall Length | 1150mm / 45in   |
| Overall Width  | 40mm / 1.6in  |
| Overall Height | 140mm / 5.51in  |
| Front Sight    | Bead  |
| Rear Sight     | Serration on receiver                                   |
| Weight, Empty  | 3.5kg / 7.72lbs   |
| Weight, Loaded | 3.6kg / 7.94lbs   |
| Finish         | Nickel chrome   |
| Stock          | Walnut buttstock with rubber butt pad and walnut forend |



# 04 | BASIC PARTS

## OVER & UNDER SHOTGUN BASIC PARTS

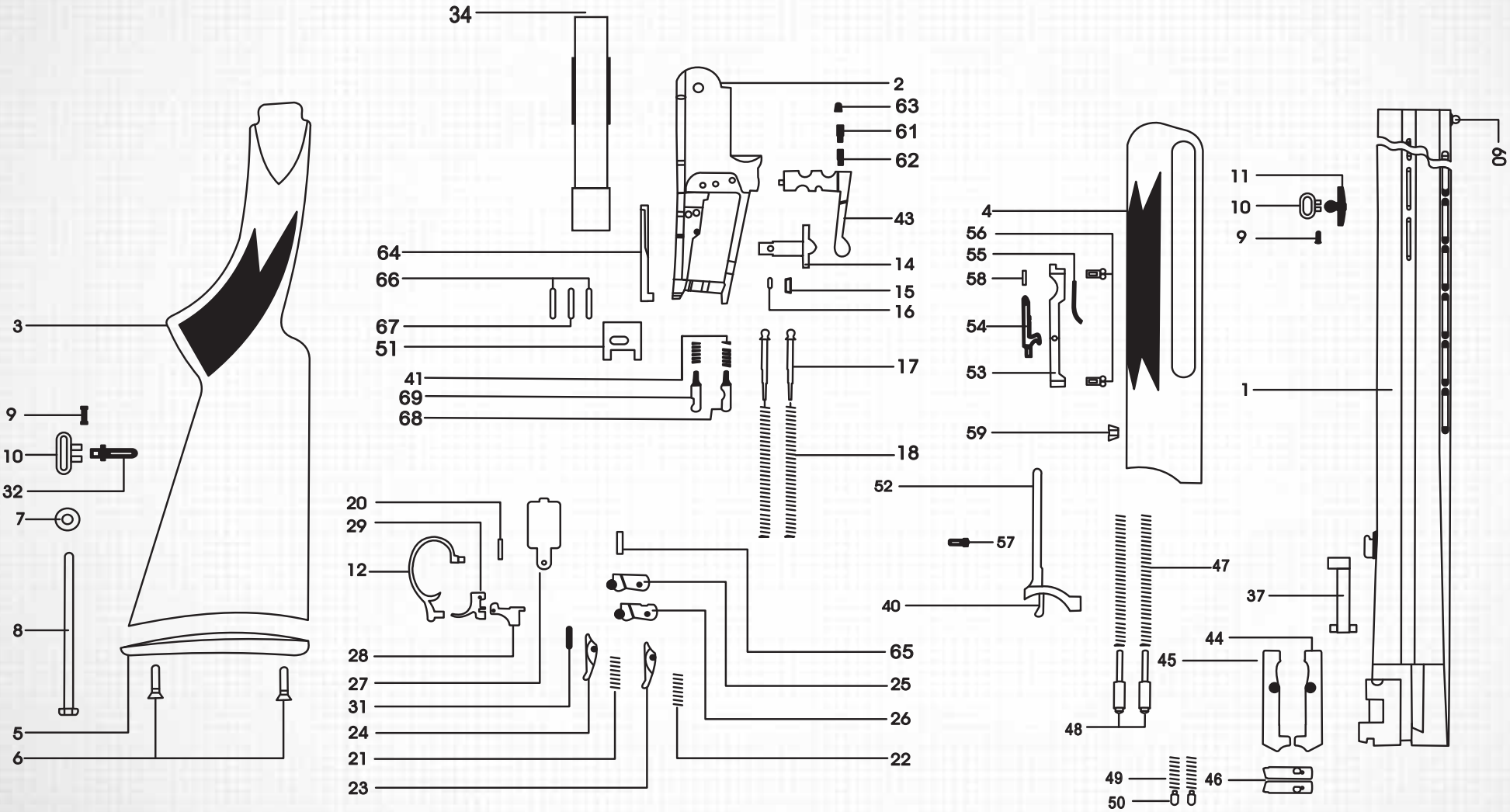
| PART NAME               | PART NUMBER |
|-------------------------|-------------|
| Barrel                  | 1           |
| Receiver                | 2           |
| Stock                   | 3           |
| Forearm                 | 4           |
| Butt Plate / Recoil Pad | 5           |
| Butt Plate Screw        | 6           |
| Stock Bolt Washer       | 7           |
| Stock Bolt              | 8           |
| Swivel Pin              | 9           |
| Swivel                  | 10          |
| Front Swivel Stud       | 11          |
| Trigger Guard           | 12          |
| Safety Selector         | 14          |
| Safety Pin              | 15          |
| Safety Spring Pin       | 16          |
| Hammer Spring Plunger   | 17          |
| Hammer Spring           | 18          |
| Trigger Pin             | 20          |
| Sear-Safety Spring      | 21          |
| Sear-Safety Spring      | 22          |

| PART NAME                      | PART NUMBER |
|--------------------------------|-------------|
| Sear (Right)                   | 23          |
| Sear (Left)                    | 24          |
| Hammer (Left)                  | 25          |
| Hammer (Right)                 | 26          |
| Lower Receiver                 | 27          |
| Safety Extractor               | 28          |
| Single Trigger                 | 29          |
| Sear Pin                       | 31          |
| Stock Swivel Stud              | 32          |
| Extractor                      | 34          |
| Extractor                      | 37          |
| Forearm Cocking Arm            | 40          |
| Firing Pin Spring              | 41          |
| Top Lever                      | 43          |
| Left Ejector Extractor         | 44          |
| Right Ejector Extractor        | 45          |
| Left and Right Lever Extractor | 46          |
| Ejector Extractor Springs      | 47          |
| Ejector Extractor Pins         | 48          |
| Ejector Extractor Spring       | 49          |

| PART NAME                   | PART NUMBER |
|-----------------------------|-------------|
| Ejector Extractor Lever Pin | 50          |
| Locking Block               | 51          |
| Forearm Iron                | 52          |
| Take Down Latch Bracket     | 53          |
| Take Down Latch             | 54          |
| Take Down Latch Spring      | 55          |
| Forearm Screw               | 56          |
| Escutcheon Screw            | 57          |
| Take Down Latch Pin         | 58          |
| Escutcheon Mortise Lock     | 59          |
| Front Bead                  | 60          |
| Top Lever Plunger           | 61          |
| Top Lever Spring            | 62          |
| Top Lever Pin               | 63          |
| Cocking Arm                 | 64          |
| Hammer Pin                  | 65          |
| Lower Receiver Pin          | 66          |
| Firing Pin Retaining Pin    | 67          |
| Firing Pin (Top)            | 68          |
| Firing Pin (Bottom)         | 69          |

# 05 | EXPLODED VIEWS

## OVER & UNDER SHOTGUN





# 06 | OPERATING INSTRUCTIONS

## ASSEMBLY

Make sure there are no shells in the chamber.

1. Remove all dirt and excess oil from gun, especially from the breech area, also barrel interior and ends.

2. Remove the forearm by pushing the forehead iron catch upwards, this allows the nose of the forearm to release. With your other hand and at the same time you are pushing the iron catch release upwards, separate the forearm from the barrel (Photo 1).

3. Lightly oil the already cleaned contact points. Attach barrels to action by grasping the grip of the stock with your right hand and placing the stock under your right arm. With your right thumb move the opening lever to the right. Now hold the barrels with your free hand and slide the barrels through the top of the receiver, with the barrel's nose pointing down until the hinge notch engages with the hinge pins (Photo 2).

4. Keeping the hinge pin notch engaged with the hinge pin, lift the nose of the barrels until the action closes.

Caution: If you attempt to close the gun and the barrels bind or don't seem to fit then the hinge pin and notch are not engaged. DO NOT FORCE, try again. Release the hinge pin and notch and the barrels will be locked in place.

5. Replace the forearm on the gun by sliding the rear of the forearm into the barrel at the same angle by which you removed it. The round rear of the forearm should match the round front of the receiver. Lift the nose of the forearm until it engages with the barrels with an audible "click." If the forearm release latch protrudes after the "click," gently push it in place. (Photo 3)



# 07 | OPERATING INSTRUCTIONS

## LOADING AND OPERATING YOUR SHOTGUN

1. Slide the safety, located on the tang of the receiver, toward the butt of the gun into the "safe" position (Photo 4).

2. Break the action open.

3. Check the barrels for any obstruction, including dirt and excess oil.

CAUTION: Obstructions can increase barrel pressure sufficiently so that the barrel can explode when the gun is fired. This may result in serious injury or death to the shooter and others in the vicinity.

4. Insert the shot shells into the chamber or chambers you plan to fire.

CAUTION: Make sure the shells are of the proper gauge and chamber length for your gun. ROCK ISLAND is not responsible for damage to a gun or shooter caused by malfunctioning ammunition, new, remanufactured, reloaded, or hand loaded.

5. Close the action.

6. The order in which the barrels are fired depends upon the selective trigger. With a single, non-selective trigger, the bottom barrel is fired first on an over/under shotgun. With a double trigger, the barrel for which your shotgun. The back trigger fires top barrel on over/under shotgun. With a selective trigger, the user determines which barrel is fired first by selecting it with the selector button. Moving the button to the right selects the top barrel to fire first on an over/under shotgun. Moving the button to the left selects the bottom barrel to fire first on an over/under shotgun.

7. When contemplating firing your gun, be sure of your target, what is behind it, and the location of all persons with you or in your vicinity. Pick your target, release the safety by sliding it forward with your thumb and squeeze the trigger with your forefinger.

8. To unload, press the opening lever to the right and open the action. Fired shells will be ejected and unfired shells will be elevated above the chamber on models with automatic selective ejectors. Models with extractors will only elevate both fired and unfired shells above the chamber.

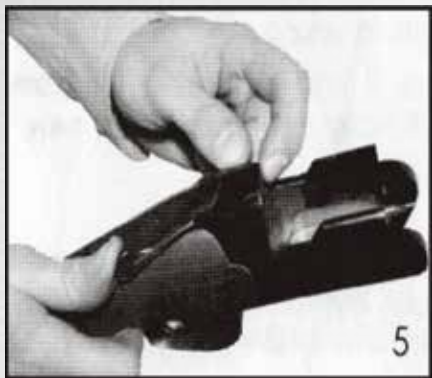


### CAUTION

*IN CASE OF A MISFIRE, WAIT AT LEAST 30 SECONDS WHILE KEEPING THE GUN POINTED IN A SAFE DIRECTION. THEN, CAREFULLY OPEN THE ACTION AWAY FROM YOURSELF AND OTHERS. IF THE PRIMER ON THE RIM IS INDENTED, THE SHELL SHOULD BE DISCARDED IN A MANNER THAT WOULD PREVENT ACCIDENTAL INJURY TO YOU AND OTHERS. IF THERE IS NO INDENTION ON THE PRIMER OR RIM, YOUR GUN HAS MALFUNCTIONED AND SHOULD BE SERVICED BY A QUALIFIED GUNSMITH. IF THE GUN IS UNDER WARRANTY IT MUST BE SERVICED BY AN AUTHORIZED ROCK ISLAND GUNSMITH TO NOT VOID WARRANTY.*

# 08 | OPERATING INSTRUCTIONS

## DISASSEMBLY



1. Make sure the gun is unloaded and no shells are in the chamber.

2. Close the action. Place the gun butt on your thigh and remove the forearm by pulling the forearm release latch or pressing the forearm release button. While pulling the nose of the forearm away from the barrels, slide the forearm forward until separated from the barrels.

3. Separate the barrels from the receiver by holding the stock of the gun in your right hand and the barrels in your left. Push the opening lever to the right with your thumb. Allow the nose of the barrels to drop and lift the barrels upward out of the receiver.

4. For over/under shotguns close the top lever by pressing on the button located in the action.

5. The gun can now be cleaned. The forearm should be reattached to the barrels for storage.



**CAUTION**

**NO FURTHER DISASSEMBLY IS NEEDED, UNLESS IT IS DONE BY PERSONS QUALIFIED IN SHOTGUN REPAIR. IMPROPER FUNCTIONING AND DAMAGE TO THE GUN MAY RESULT OTHERWISE.**

## USAGE OF CHOKE TUBES

|            | SKEET | IC   | M   | IM | F |
|------------|-------|------|-----|----|---|
| CHOKE TUBE |       |      |     |    |   |
| BBLS       | CL    | ★★★★ | ★★★ | ★★ | * |

The choke is what controls the openness or tightness of the pattern of your shotgun. The chart below lists the chokes available (from open to tight), and the corresponding marks that indicate the choke of your specific shotgun.

Never fire or run gun cleaning tools through a barrel that uses choke tubes without having a choke tube installed. The threads of the choke tube and the internal threads of the barrel should be cleaned after each use and before installation of the tube.

To install a tube, insert the tube into the barrel and tighten with your fingers. Once the tube is finger tightened, tighten with the appropriate choke-tube wrench until the tube is snug. DO NOT over tighten or forcefully tighten with wrench.

## IMPORTANT USAGE OF STEEL SHOT

The shake (bore constriction) in all modern shotguns has been established based on the pattern performance of shot shells loaded with lead shot. When using steel shot shells, you will notice a different performance in pattern density versus the established lead shot pattern, because the steel shot is harder and lighter than lead shot.

You should be aware of the following differences and cautions:

Never shoot steel shot loads in a full choked barrel or an improved modified choked barrel. To do may cause the barrel to swell or rupture. In general, steel shot fired with a modified shake will produce the equivalent of a lead full choke pattern. This will be true of all steel shot sized up to and including no. 2. The established improved cylinder chokes will produce the equivalent of a (lead) modified pattern.

All steel shot sized larger than no. 2, and including special sized such as F, T, etc., should be used only with improved cylinder chokes. These steel shot sizes, when used in an improved cylinder choke, will produce equivalent to (lead) full choke patterns. The established cylinder choke or bore will produce the equivalent of a modified (lead) pattern.

Additional information concerning the use of steel shot is available from the ammunition companies

## MAINTENANCE AND CLEANING

1. Make sure the broad, polished finely fitted mating surface of the breech block and receiver is especially clean and lightly oiled with high quality gun oil. Do not use silicone or lanolin (Do not use WD-40).
2. Run an oil patch through the bore with a cleaning rod starting from the breech end. To prevent leading, use a cleaning solvent and brass brush to clean the bore periodically. Follow this cleaning with one or two clean oil patches.  
Important: If your gun is equipped with choke tubes, do not use a brass brush to clean the barrels without having a choke tube installed. Barrels that utilize choke tubes must also have the choke tubes removed to clean and oil the threads inside the barrel and the choke tubes themselves. This will protect the threads and prevent dirt build up that can cause tubes to become difficult to remove.  
Never fire your gun without choke tubes snugly tightened in barrels. Do not over tighten choke tubes. Wipe all exposed metal surfaces with an oiled cloth before storing. Do not squirt or pour oil into the inside mechanism because it may hamper proper functioning. After extended periods of heavy use, your gun should be taken to a qualified gunsmith to have the action disassembled for professional cleaning and lubrication.
3. Care for your wood stock and forearm the same way you would a piece of furniture with the same finish.

## STORAGE

Clean thoroughly and oil your gun before storage. Store the gun in a case to prevent scratches and dents. Store your firearm in a dry place to prevent corrosion. Store the gun away from children and in a place where it cannot be obtained by those unauthorized to use it. Always store gun unloaded and separately from any ammunition.



SCAN QR

SEE FULL VIDEO TUTORIALS ON OUR  
WEBSITE

## STORAGE AND TRANSPORTATION

When storing the firearm and ammunition, store in separate locations, store ammo in a cool, dry location.

When storing the gun for a prolonged period of time, It is necessary to oil it heavily with an acid-free lubricant. The external parts must be coated with an anti-rust oil or grease to prevent moisture causing the parts to rust and malfunction. Before usage, the shotgun must be cleaned and wiped dry again as discussed previously.

### **WARNING:**

*CHILDREN ARE ATTRACTED TO AND CAN OPERATE FIREARMS THAT CAN CAUSE SEVERE INJURIES OR DEATH. PREVENT CHILD ACCESS BY ALWAYS KEEPING FIREARMS LOCKED AWAY AND UNLOADED WHEN NOT IN USE. IF YOU KEEP A LOADED FIREARM WHERE A CHILD OBTAINS AND IMPROPERLY USES IT, YOU MAY BE FINED OR SENT TO PRISON.*

### **WARNING:**

*THE FIREARM SHOULD BE RE-STORED IN ROOMS WITH A DRY ATMOSPHERE AND WITH THE LEAST HUMIDITY. IT SHOULD NOT BE STORED ENCASED IN LEATHER OR ANYTHING THAT WILL ATTRACT AND HOLD MOISTURE, CAUSING IT TO RUST.*

## ORDERING PARTS

Visit RIA website to browse, learn more about and purchase parts and ammunition for all of your Rock Island Armory products.

 [www.advancedtactical.com](http://www.advancedtactical.com)



## WARRANTY REGISTRATION

Armcor's warranty covers its firearms and parts. We offer limited lifetime warranty on our products for their intended purpose. As with any product, abuse, gunsmithing by an unqualified person and normal wear and tear are excluded. Additionally, if the firearm was modified and/or repaired by an unqualified gunsmith without permission from Armcor, then the warranty will be void. If warranty work should be required, return the firearm to the address listed below. There is no refund for the shipping cost. Gunsmithing services are available by registered Armcor Gunsmithers. Please email the address below.

To register your firearm, please go to [www.rockislandarmory.com/support-center/warranty/](http://www.rockislandarmory.com/support-center/warranty/) and complete online warranty form. In comments section, write warranty registration and press submit. You can also go to [www.rockislandarmory.com](http://www.rockislandarmory.com) and press warranty section at the bottom.

For more information on warranty, visit [www.rockislandarmory.com](http://www.rockislandarmory.com), or email [support@armcor.com](mailto:support@armcor.com)

Armcor Precision International  
150 North Smart Way  
Pahrump, NV 89060  
Email: [support@armcor.com](mailto:support@armcor.com)

## IMPORTANT WARRANTY INFORMATION

Our Rock Island Armory shotguns are warranted to function only with Factory Ammo. Use of Handloads is not covered in Warranty of Repair for the function of the Firearm.

DUE TO THE FIT AND TIGHTNESS OF FIREARM, RIA RECOMMENDS A BREAK-IN PERIOD OF 500 ROUNDS.

### THIS IS HOW YOU VOID YOUR WARRANTY

- \* Refinishing your RIA firearm
- \* Misuse, Mishandling, Dropping your RIA Firearm
- \* Firing Remanufactured or Reloaded Ammunition
- \* Not properly reassembling your RIA Firearm resulting in damage, ie reverse plugs!
- \* Any addition of after market parts
- \* Unauthorized repairs done by any other than Rock Island Armory

### LIMITS ON WARRANTY (will not cover)

- \* Finish, Holster wear, Scratches, Chemical damage
- \* After Market Magazines
- \* Damage to Factory Magazines
- \* Sights not installed by Rock Island Armory
- \* Recoil Springs

WE RESERVE THE RIGHT TO CHARGE FOR LABOR, PARTS AND SHIPPING TO RETURN YOUR RIA FIREARM BACK TO FACTORY SPECIFICATIONS IF IT HAS BEEN ALTERED.

## NOTES





[WWW.ROCKISLANDARMORY.COM](http://WWW.ROCKISLANDARMORY.COM)

