

STK SERIES PISTOL

USER'S MANUAL



WARNING: READ THE INSTRUCTIONS AND SAFETY PRECAUTIONS IN THIS MANUAL CAREFULLY BEFORE USING THE FIREARM.



ROCK ISLAND ARMORY



OWNER/USER'S MANUAL
**ROCK ISLAND ARMORY
STRIKER-FIRED PISTOL**
SAFETY, INSTRUCTION AND PARTS MANUAL

As a responsible owner of this firearm, you must read the instructions and warnings in this manual carefully. Before using this firearm, make sure you clearly understand all warnings, cautions, and instructions discussed in this manual. This manual explains the functions and handling of your pistol.

This manual must always be in the firearm's carrying case wherever you bring it or when you transfer the ownership of your Striker fired pistol.

This manual must always be followed to minimize and reduce the risk of an accidental discharge. Failure to do so could result in death, serious personal injury, and/or property damage. The manual contains several "WARNING" which indicates a hazardous situation that may result in serious physical injury or death, if not avoided.

For any question regarding any unclear instruction mentioned in this manual and/or if you need a copy of this manual, you may reach out to:

ARMSCOR GLOBAL DEFENSE, INC.
Arm Scor Avenue, Fortune, Marikina City 1810, Philippines
Tels. (632) 8941 – 6243, (632) 8941 – 6244, (632) 8941 – 4252,
(632) 8941 – 8279, (632) 8941 – 4288
Fax No.: (632) 8941-4265
Email: info@armscor.com.ph
Website: www.armscor.com

TABLE OF CONTENTS

- 1 Statement of Liability
- 2 Safety Instructions
- 3 All About Your Pistol

HEALTH & SAFETY

- 5 Tech Specs
- 8 Basic Parts
- 10 Exploded Views

ABOUT THE FIREARM

- How it Functions 13
- Loading & Unloading the Pistol 14
- Disassembly 15
- Reassembly And Inspection 16
- Storage and Transportation 19
- Ordering Parts 20
- Warranty 21
- Notes 22

MAINTENANCE



01 | STATEMENT OF LIABILITY

STATEMENT OF LIABILITY

The STK SERIES pistol is classified as a firearm or dangerous weapon. It is expressly understood that Armscor Global Defense Inc. assume no liability for its resale or unsafe handling under local laws and regulations, or for physical injury or property damage resulting from either intentional or accidental discharge, or for the function of the pistol subjected to influences beyond the manufacturer's control.

Armscor Global Defense Inc. will honor no claims which may result from careless handling, unauthorized adjustments, defective or improper ammunition, corrosion, or neglect.

YOUTH HANDGUN SAFETY ACT NOTICE

(*Taken from Youth Handgun Safety Act of 1993)

1. The misuse of handguns is a leading contributor to juvenile violence and fatalities.
2. Safely storing and securing firearms away from children will help prevent the unlawful possession of handguns by juveniles, stop accidents, and save lives.
3. Federal law prohibits, except in certain limited circumstances, anyone under 18 years of age knowingly possessing a handgun, or any person from selling, delivering, or otherwise transferring a handgun to a person under 18.
4. A knowing violation of the prohibition against selling, delivering, or otherwise transferring a handgun to a person under the age of 18 is, under certain circumstances, punishable by up to 10 years in prison.

State-By-State Warnings



CALIFORNIA STATE WARNING

CHILDREN ARE ATTRACTED TO AND CAN OPERATE FIREARMS THAT CAN CAUSE SEVERE INJURIES OR DEATH. PREVENT CHILD ACCESS BY ALWAYS KEEPING FIREARMS LOCKED AWAY AND UNLOADED WHEN NOT IN USE. IF YOU KEEP A LOADED FIREARM WHERE A CHILD OBTAINS AND IMPROPERLY USES IT, YOU MAY BE FINED OR SENT TO PRISON. IT IS UNLAWFUL TO USE A MAGAZINE WITH A CAPACITY OVER 10 ROUNDS.



MASSACHUSETTS STATE WARNING

IT IS UNLAWFUL TO CARRY ANY MAGAZINE OR BELT WHICH HOLDS MORE THAN TEN ROUNDS, UNLESS AUTHORITY IS GRANTED BY THE BOSTON POLICE COMMISSIONER. IT IS UNLAWFUL TO STORE OR KEEP A FIREARM, RIFLE, SHOTGUN OR MACHINE GUN IN ANY PLACE UNLESS THAT WEAPON IS EQUIPPED WITH A TAMPER RESISTANT SAFETY DEVICE OR IS STORED OR KEPT IN A SECURELY LOCKED CONTAINER.



NEW YORK STATE WARNING

IT IS UNLAWFUL TO CARRY ANY MAGAZINE OR BELT WHICH HOLDS MORE THAN SEVEN ROUNDS, UNLESS AUTHORITY IS GRANTED BY THE STATE OF NEW YORK. THE USE OF A LOCKING DEVICE OR SAFETY LOCK IS ONLY ONE ASPECT OF RESPONSIBLE FIREARMS STORAGE FOR INCREASED SAFETY. FIREARMS SHOULD BE STORED UNLOADED AND LOCKED IN A LOCATION THAT IS BOTH SEPERATED FROM THEIR AMMUNITION AND INACCESSIBLE TO CHILDREN AND OTHER UNAUTHORIZED PERSONS.

02 | SAFETY INSTRUCTIONS

Safety must be the first and constant consideration of every person who handles firearms and ammunition. Improper handling of firearms can cause serious injury and death. Always think of it as a dangerous weapon and it is your responsibility to handle guns safely. Accidents happen when you violate the basic rules of safe gun handling. As such, it is very important to read and follow these safety instructions:

BASIC RULES IN HANDLING A FIREARM

1. Even if there are safety features incorporated in your firearm, do not rely on these mechanical features alone.
2. Seek a doctor's advice if you are taking any medications to ensure that you can shoot and handle firearms safely. Do not drink any alcoholic beverages nor take drugs before and during shooting. This could seriously impair your vision and judgment making your firearm handling unsafe and dangerous.
3. Beware of any obstructions in a barrel. When a weak or peculiar sound is heard, cease firing and inspect the barrel for any obstructions.
4. Keep the pistol pointed at the target for at least 30 seconds when a misfire happened. A hang fire or delayed firing may occur.
5. When possible, wear shooting glasses and earmuffs/protection when firing. This is to protect your eyes from spent cartridges and ears from loud noise during firing.

FOUR BASIC RULES OF GUN SAFETY

1. Treat every firearm as if it were loaded. Always check for yourself to make sure that the firearm is unloaded.
2. Never point the gun at anyone or anything you don't intend to shoot.
3. Always keep your finger out of the trigger guard until you are ready to fire.
4. Always keep your gun pointed in a safe direction. Always be aware of what is in the front and the back of your target.

6. Firearms should be handled with proper care. Improper and careless handling could cause accidental discharge which could result in death, serious personal injury, and/ or property damage.
7. Always make sure that the pistol is unloaded by having the slide locked open in the rearward position. Also, always take out the magazine before handing it over to another person.
8. Never carry your pistol out of the holster with a loaded cartridge in its chamber. This could result in an accidental discharge.
9. Always store your pistol unloaded and locked in an appropriate container, such as the included pistol case. Make sure it is out of reach and sight of children or any other unauthorized person. Do not store or transport ammunition in the same container as your pistol.
10. If in any case that the designed pistol's safety features proved to be ineffective for any reason, the risk of an unintentional discharge is high. Immediately unload your pistol, do not use it, and have it examined by the authorized personnel of the manufacturer.

03 | SAFETY INSTRUCTIONS

ALL ABOUT YOUR PISTOL

The STK SERIES PISTOL, built with the needs and demands of the user in mind, combines the features from the striker-fired pistol available in the market and improves upon them all:

FRAME - Made from 7000 series aircraft-grade aluminum, known for its durability and lightweight. The frame features an ideal grip angle which is designed for ease and comfort of the user. The slide stop lever and magazine catch are easily operated with the shooting hand for better ergonomics.

The Ergonomic Neutral Pointing Grip Angle design aligns the pistol with the natural angle of the shooter's wrist, offering several benefits like: Improved Aiming; Reduces wrist adjustments, allowing for quicker, more accurate target acquisition. Enhanced Comfort: Minimizes wrist strain, beneficial for extended use.

Also, an integrated light rail on the frame provides the ability to attach tactical lights or lasers, offering: Low-Light Performance; Improves target identification in dim conditions. Enhanced Accuracy; Lasers provide precise aiming points, aiding in high-stress situations. And Versatility: Allows for customization with various accessories.

SLIDE - Crafted from high tensile carbon alloy steel by state-of-the-art machines and undergoes advanced heat treatment resulting in optimum hardness, thereby reducing the wear and tear and making it corrosion resistant. The slide features additional forward serrations with a PECVD coating finish which is ideal for tactical operations and circumstances.

Optic-ready rear sight with a cover plate is designed for mounting optical sights, like red dots, while also allowing use of iron sights. This feature offers versatility, allowing shooters to switch between optics and traditional sights based on their needs.

BARREL - The high tensile carbon alloy steel barrel features a 1 turn in 10" twist rate (right-hand). This ensures that the bullet reaches the optimum and adequate stability during firing. Moreover, the barrel features a rounded interior profile which ensures easier cleaning and maintains consistent precision after several rounds had been fired.

04 | SAFETY INSTRUCTIONS

LOADED CHAMBER INDICATOR



Depressed Extractor
Pistol is not loaded



Depressed Extractor
Pistol is not loaded

The STK SERIES pistol's extractor is also designed as the loaded chamber indicator which would serve as the mechanism to determine if the pistol is loaded with ammunition. The extractor is depressed when the chamber is not loaded and pivots out if it is loaded.

SAFETY TRIGGER ACTION SYSTEM

STK SERIES pistol does not feature a conventional manual safety. The pistol's safety mechanism relies heavily on the trigger: three internal mechanically operating safeties disengage and engage as the trigger is being pulled and released, respectively. This safety mechanism allows the pistol to be dropped, still wouldn't fire as long as the trigger is not pulled – such allows the owner to focus more on tactical tasks while under pressure.



TRIGGER SAFETY - The trigger safety is a lever housed together with the trigger. This blocks the trigger from moving rearward when the trigger safety is in the forward position. To fire the pistol, both the trigger and the trigger safety need to be fully depressed. By not depressing the trigger safety, the trigger is hindered to move rearward, thus not allowing the pistol to fire. This mechanism is purposely designed to ensure that the pistol will not fire if it is accidentally dropped or if the trigger is subjected to lateral pressure.



FIRING PIN SAFETY - The firing pin safety is designed to block the firing pin from moving forward in the ready-to-fire position in case the user decides not to fire and releases the trigger. The firing pin safety disengages as the trigger is pulled rearward at which the trigger bar pushes the firing pin safety up and frees the firing pin channel.



DROP SAFETY - Resting within the trigger mechanism housing is the trigger bar. This engages with the firing pin's rear part which prevents it to move forward. Pulling the trigger causes the trigger bar to drop down the safety ramp and permits the release of the firing pin allowing the pistol to fire. After firing, the trigger bar moves up and re-engages with the firing pin.

AMMUNITION - The pistol utilizes a cal. 9x19mm ammunition. Use high quality, SAAMI-, CIP-, or NATO-compliant ammunition manufactured in accordance with industry standards. Always examine your ammo particularly on and around the primer before loading the magazine. Look for dents, scratches, improper crimping, loose case mouths, and other signs of damage.

WARNING:

LOAD ONLY HIGH QUALITY, SAAMI-, CIP-, OR NATO-COMPLIANT AMMUNITION IN THE SAME CALIBER AS YOUR PISTOL. WHILE THE PISTOL CAN ACCOMMODATE REMANUFACTURED OR HAND-LOADED AMMUNITIONS THAT ARE SAAMI-, CIP-, OR NATO-COMPLIANT, ARMSCOR DISCLAIMS ALL LIABILITIES RESULTING FROM THE USE OF ANY REMANUFACTURED OR HAND-LOADED AMMUNITION (SEE IMPORTANT WARRANTY INFORMATION).

WARNING:

ALWAYS CHECK IF THE TRIGGER IS IN FORWARD POSITION. YOUR PISTOL IS HIGHLY LIKELY TO BE LOADED IF THE TRIGGER IS IN FORWARD POSITION.

THE PISTOL DOES NOT FEATURE A CONVENTIONAL MANUAL SAFETY AND WILL FIRE IF YOU PULL THE TRIGGER

THE SAFETY FUNCTIONS OF THE PISTOL DEPENDS ON THE PROPER AND INTENDED USE OF THE FIREARM. ANY ALTERATIONS OR MODIFICATIONS ON THE PISTOL MIGHT AFFECT ITS SAFETY MECHANISMS. UNUSUAL OR EXTREME FORCES CAN CAUSE FAILURE ON THE PISTOL.

DO NOT RELY ON THE LOADED CHAMBER INDICATOR TO KNOW IF YOUR PISTOL IS LOADED. THIS IS STILL A MECHANICAL DEVICE AND HAS A POSSIBILITY TO FAIL. IT IS BEST TO ALWAYS CHECK FOR YOURSELF WHETHER YOUR PISTOL IS LOADED.

WHAT'S INSIDE THE PISTOL SET

- Pistol – One Unit
- Magazine – One Magazine
- Safety, Instructions, and Parts Manual
- RMSC (1 pc.) and RSH (1 pc.) optic plate adaptor
- M3x10MM(4pcs.), M3x4MM ultra low(4pcs.) and #6-32x3/8(4pcs.) screws
- Pistol soft case
- Assembly Card
- Trigger Retaining Pin (1pc)

STK 100 ULTRA SPECS	Make	Armscor / Rock Island Armory
	Model	STK100 ULTRA
	Model No.	57113
	Caliber	9MM
	Action	Semi-Auto, Recoil Operated
	Magazine Capacity	17 rounds
	Barrel Length	114mm / 4.49 in
	Overall Length	198mm / 7.79 in
	Overall Width	34.5mm / 1.36 in
	Overall Height (w/o Mag.)	137mm / 5.40 in
	Trigger Pull	1.36 – 3.18kgs / 3.0 – 7.0lbs
	Front Sight	Fixed, with white dot (Co-witness)
	Rear Sight	Fixed, with white dot (Co-witness)
	Slide	Optic Ready
	Approx. Weight (w/o Mag.)	0.85 kgs / 1.88 lbs.
	Rifling Twist	1:254mm (1:10), Right-Hand
	No. of Grooves	6
Stock	Aluminum Grips (Black Anodize)	
Finish	Black Anodized Coating for Frame; Black, Plasma-Enhanced Chemical Vapor Deposition (PECVD) Coating for Slide, Barrel and Chassis; Parkerized finish for other small parts	

06 | TECH SPECS

STK 150 SPECS

Make	Armscor / Rock Island Armory
Model	STK150
Model No.	56611
Caliber	9MM
Action	Semi-Auto, Recoil Operated
Magazine Capacity	17 rounds
Barrel Length	102mm / 4 in
Overall Length	187mm / 7.36 in
Overall Width	33.3mm / 1.31 in
Overall Height (w/o Mag.)	131mm / 5.16 in
Trigger Pull	1.36 – 3.18kgs / 3.0 – 7.0lbs
Front Sight	Fixed, with white dot (Co-witness)
Rear Sight	Fixed, with white dot (Co-witness)
Slide	Optic Ready
Approx. Weight (w/o Mag.)	0.82 kgs / 1.80 lbs.
Rifling Twist	1:254mm (1:10), Right-Hand
No. of Grooves	6
Stock	G10 Grips (Black)
Finish	Black Anodized Coating for Frame; Black, Plasma-Enhanced Chemical Vapor Deposition (PECVD) Coating for Slide, Barrel and Chassis; Parkerized finish for other small parts

STK 200 SPECS

Make	Armscor / Rock Island Armory
Model	STK200
Model No.	56621
Caliber	9MM
Action	Semi-Auto, Recoil Operated
Magazine Capacity	15 rounds
Barrel Length	102mm / 4 in
Overall Length	187mm / 7.36 in
Overall Width	33.3mm / 1.31 in
Overall Height (w/o Mag.)	128mm / 5 in
Trigger Pull	1.36 – 3.18kgs / 3.0 – 7.0lbs
Front Sight	Fixed, with white dot (Co-witness)
Rear Sight	Fixed, with white dot (Co-witness)
Slide	Optic Ready
Approx. Weight (w/o Mag.)	0.77 kgs / 1.70 lbs.
Rifling Twist	1:254mm (1:10), Right-Hand
No. of Grooves	6
Stock	G10 Grips (Black)
Finish	Black Anodized Coating for Frame; Black, Plasma-Enhanced Chemical Vapor Deposition (PECVD) Coating for Slide, Barrel and Chassis; Parkerized finish for other small parts

07 | BASIC PARTS

STK100 ULTRA (57113) BASIC PARTS

No.	PART NAME	PART NUMBER
1	Barrel	STK10001i
2	Firing Pin Safety	SF902
3	Firing Pin Safety Spring	SF903
4	Cover Plate	SF904
5	Slide	STK10005MFUj
6	Extractor Depressor Plunger	SF906
7	Extractor Depressor Plunger Spring	SF907
8	Spring Loaded Bearing	STK10008
9	Firing Pin	SF909
10	Firing Pin Spring	SF910
11	Spacer Sleeve	SF911
12	Spring Cups	SF912
13	Front Sight	STK20013
14	Front Sight Screw	STKD113B
15	Rear Sight	STK20014
16	Red Dot Sight Cover Plate	STK20014A
17	Rear Sight Screw	STK20014B
18	Red Dot Sight Cover Plate Screw	SF914B
19	Recoil Spring	STK10015
20	Recoil Spring Guide Assembly	SF917-A
21	Recoil Spring Guide	SF917

No.	PART NAME	PART NUMBER
22	Recoil Spring Guide Washer	SF917A
23	Recoil Spring Guide Screw	SF917B
24	Extractor	SF918
25	Channel Liner	SF919
26	Magazine Assembly	STKD119A
27	Frame	STK20020A
28	Frame Assembly	STKD120-A
29	Frame Left	STKD120AL*
30	Frame Right	STKD120AR*
31	Front Chassis	STK20020AFI*
32	Rear Chassis	STK10020ARCI*
33	Trigger Safety	STK20020B
34	Trigger Safety Spring	STK20020BS
35	Trigger Safety Screw	SF920C
36	Trigger Set Screw	STK20020C
37	Connector	SF920D
38	Trigger Mechanism Housing	SF920E
39	Trigger Housing Pin	STKD120F
40	Trigger	STK20020H
41	Trigger Retaining Pin	STK120I
42	Slide Lock	SF920M

No.	PART NAME	PART NUMBER
43	Slide Catch	SF920N
44	Slide Catch Spring	SF920O
45	Trigger Bar	SF920P
46	Trigger Bar Spring	SF920Q
47	Slide Lock Spring	SF920R
48	Ejector	SF920S
49	Retaining Screw A	STK10021*
50	Retaining Screw B	STK10021A*
51	Retaining Screw C	STK10021B*
52	Retaining Screw D	STK10021C*
53	Retaining Pin	STL10022
54	Magazine Catch	STK10023
55	Grip Panel Left	STKD124
56	Grip Panel Right	STKD125
57	Grip Screw	STK10021B
58	Magazine Release Lock	38025
59	Magazine Release Spring	38026

08 | BASIC PARTS

STK150 (56611) BASIC PARTS

No.	PART NAME	PART NUMBER
1	Barrel	STK20001i
2	Firing Pin Safety	SF902
3	Firing Pin Safety Spring	SF903
4	Cover Plate	SF904
5	Slide	STK20005i
6	Extractor Depressor Plunger	SF906
7	Extractor Depressor Plunger Spring	SF907
8	Spring Loaded Bearing	STK10008
9	Firing Pin	SF909
10	Firing Pin Spring	SF910
11	Spacer Sleeve	SF911
12	Spring Cups	SF912
13	Front Sight	STK20013
14	Front Sight Screw	STKD113B
15	Rear Sight	STK20014
16	Red Dot Sight Cover Plate	STK20014A
17	Rear Sight Screw	STK20014B
18	Red Dot Sight Cover Plate Screw	SF914B
19	Recoil Spring	STK20015
20	Recoil Spring Guide Assembly	STK20015-A
21	Recoil Spring Guide	STK20017

No.	PART NAME	PART NUMBER
22	Recoil Spring Guide Washer	SF917A
23	Recoil Spring Guide Screw	SF917B
24	Extractor	SF918
25	Channel Liner	SF919
26	Magazine Assembly	STK10019A
27	Frame	STK15020A
28	Front Chassis	STK20020AFi
29	Front Chassis Sleeve	STK20020AFS
30	Front Chassis Sleeve Screw	STK200AFSS
31	Rear Chassis	STK10020ARCi
32	Trigger Safety	STK20020B
33	Trigger Safety Spring	STK20020BS
34	Trigger Safety Screw	SF920C
35	Trigger Set Screw	STK20020C
36	Connector	SF920D
37	Trigger Mechanism Housing	SF920E
38	Trigger Housing Pin	STK120F
39	Trigger	STK20020H
40	Trigger Retaining Pin	STKD120I
41	Slide Lock	SF920M
42	Slide Catch	SF920N

No.	PART NAME	PART NUMBER
43	Slide Catch Spring	SF920O
44	Trigger Bar	SF920P
45	Trigger Bar Spring	SF920Q
46	Slide Lock Spring	STK20020R
47	Ejector	SF920S
48	Magazine Catch Assembly	STK20023-A
49	Magazine Catch Body	STK20023A
50	Magazine Catch Head	STK20023B
51	Magazine Catch Spring	STK20023C
52	Magazine Catch Pin	STK20023D
53	Magazine Catch Head Spring	STK20023E
54	Magazine Catch Stopper	STK20023G
55	Grip Panel left	STK20024G10
56	Grip Panel Right	STK20025G10
57	Grip Screw	STK10021B

09 | BASIC PARTS

STK200 (56621) BASIC PARTS

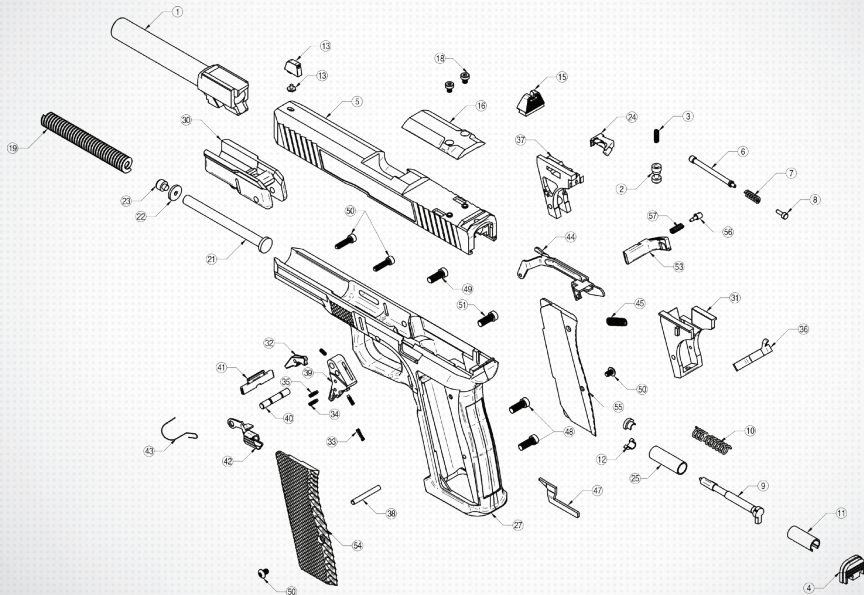
No.	PART NAME	PART NUMBER
1	Barrel	STK20001i
2	Firing Pin Safety	SF902
3	Firing Pin Safety Spring	SF903
4	Cover Plate	SF904
5	Slide	STK20005i
6	Extractor Depressor Plunger	SF906
7	Extractor Depressor Plunger Spring	SF907
8	Spring Loaded Bearing	STK10008
9	Firing Pin	SF909
10	Firing Pin Spring	SF910
11	Spacer Sleeve	SF911
12	Spring Cups	SF912
13	Front Sight	STK20013
14	Front Sight Screw	STKD113B
15	Rear Sight	STK20014
16	Red Dot Sight Cover Plate	STK20014A
17	Rear Sight Screw	STK20014B
18	Red Dot Sight Cover Plate Screw	SF914B
19	Recoil Spring	STK20015
20	Recoil Spring Guide Assembly	STK20015-A
21	Recoil Spring Guide	STK20017

No.	PART NAME	PART NUMBER
22	Recoil Spring Guide Washer	SF917A
23	Recoil Spring Guide Screw	SF917B
24	Extractor	SF918
25	Channel Liner	SF919
26	Magazine Assembly	STK10019A
27	Frame	STK20020A
28	Front Chassis	STK20020AFi
29	Front Chassis Sleeve	STK20020AFS
30	Front Chassis Sleeve Screw	STK200AFSS
31	Rear Chassis	STK10020ARCi
32	Trigger Safety	STK20020B
33	Trigger Safety Spring	STK20020BS
34	Trigger Safety Screw	SF920C
35	Trigger Set	STK20020C
36	Connector	SF920D
37	Trigger Mechanism Housing	SF920E
38	Trigger Housing Pin	STK120F
39	Trigger	STK20020H
40	Trigger Retaining Pin	STK120I
41	Slide Lock	SF920M
42	Slide Catch	SF920N

No.	PART NAME	PART NUMBER
43	Slide Catch Spring	SF920O
44	Trigger Bar	SF920P
45	Trigger Bar Spring	SF920Q
46	Slide Lock Spring	STK20020R
47	Ejector	SF920S
48	Magazine Catch Assembly	STK20023-A
49	Magazine Catch Body	STK20023A
50	Magazine Catch Head Body	STK20023B
51	Magazine Catch Spring	STK20023C
52	Magazine Catch Pin	STK20023D
53	Magazine Catch Head Spring	STK20023E
54	Magazine Catch Stopper	STK20023G
55	Grip Panel left	STK20024G10
56	Grip Panel Right	STK20025G10
57	Grip Screw	STK10021B

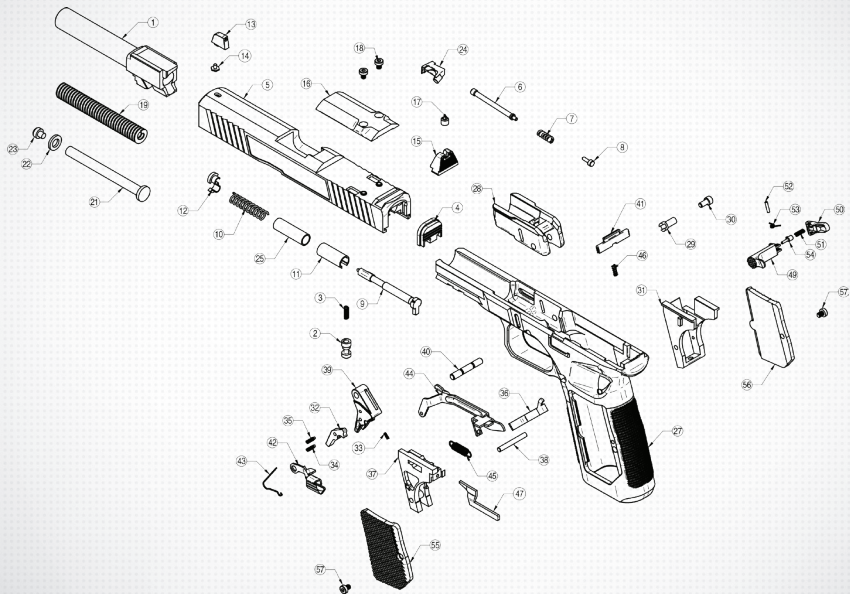
10 | EXPLODED VIEWS

STK100 ULTRA
MODEL No. 57113



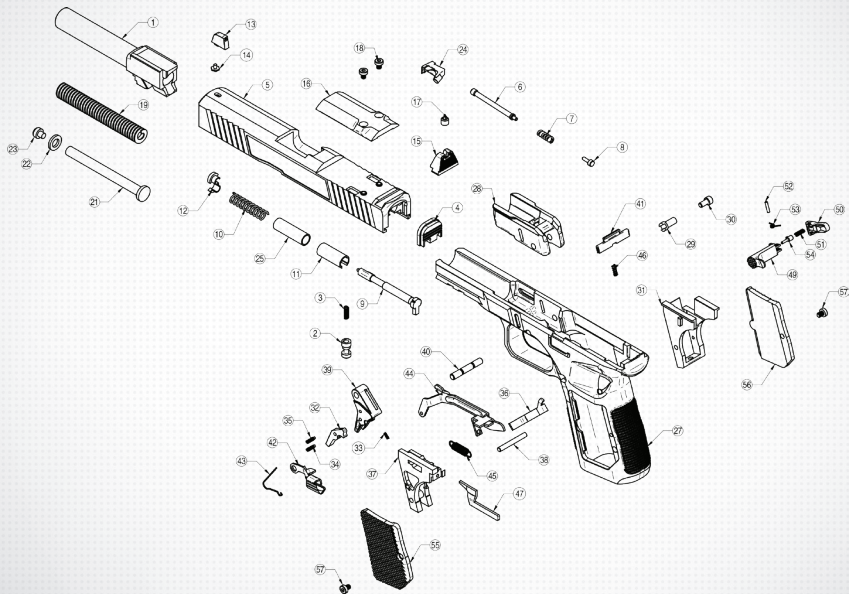
11 | EXPLODED VIEWS

STK150 ULTRA
MODEL No. 56611



12 | EXPLODED VIEWS

STK200 ULTRA
MODEL No. 56621



13 | HOW IT FUNCTIONS

The semi-automatic pistol utilizes a striker-fired mechanism that delivers consistent trigger pull from the first shot to the last shot. The full mechanism of the pistol is described as follows:

Three simultaneous mechanisms happen when your pistol is in its ready-to-fire condition that involves the Safety Trigger Action System:

1. The trigger safety protrudes from the trigger when the trigger is in the forward position.
2. The firing pin safety engages with the firing pin while the firing pin spring experiences partial tension;
3. The drop safety is engaged.
4. The firing pin safety hinders the firing pin from moving forward while keeping the trigger safety on blocking the trigger to move rearward.
5. The trigger safety is disengaged by depressing it until it is even with the trigger. By then, the trigger can be pulled rearward.
6. At about 0.2in or 5mm, the trigger slack is taken up to the first pressure point by pulling it rearward. The trigger bar then raises and disengages with the firing pin safety. After which, the firing pin experiences extra tension.
7. The trigger bar separates from the end of the firing pin and drops down upon pulling the trigger fully up to the rear. This releases the firing pin to move forward under pressure which strikes the primer of the cartridge in the chamber, thereby causing the pistol to fire.
8. The recoil impulse pushes the slide backward. Once the slide moved about 0.1in / 2.5mm to the rear, the locking action between the barrel

and the slide is released. The barrel then swings down over the locking block and is retained in that position.

9. The slide continues to move fully rearward by itself. During the process, the fired cartridge case is ejected out of the chamber of the barrel by the extractor and thrown out to the right by the ejector.

10. The ramp in the slide rails then separates the connector from the trigger bar causing the trigger bar to be lifted by the trigger spring and brought it back into the path of the firing pin nose.

11. The recoil spring pushes the slide forward which then releases the trigger. These mechanisms take place simultaneously as the slide moves forward:

- the trigger bar is pushed onto the safety ramp by the firing pin;
- the firing pin safety engages;
- the firing pin is put back under partial tension;
- the next cartridge is loaded away from the magazine and placed into the chamber;
- the barrel is locked with the slide; and
- the trigger returns to the forward position with the trigger safety positively protruding from the trigger.

The pistol is automatically loaded until the magazine is empty. After the last round has been fired, the slide will remain locked open in the rearward position by the slide stop lever. (Note: If you are firing your pistol without a magazine inserted, the slide will not remain locked open in the rearward position after firing).

*Clean your pistol before and after firing. See "CLEANING THE PISTOL" for proper cleaning of your pistol.

*In any case of malfunction or jam, refer to "CLEARING JAMS AND MALFUNCTIONS".

14 | LOADING & UNLOADING THE PISTOL

LOADING THE MAGAZINE

1. Grasp magazine in one hand and place around on the magazine follower with the base of the shell first and push down.
2. Let the cartridge slide under the feed lips until the base of the cartridge touches the flat edge of the magazine.
3. Place next round on top of previous round, press down again and into the back.
4. Repeat until the magazine is loaded to its rated capacity. Do not exceed capacity.

LOADING THE PISTOL

Insert the magazine into the magazine well until it locks into place. Check the slide positioning. If the slide is in the forward position:

- Hold the pistol using your firing hand. Grasp the rear of the slide at the serrations using your other hand while keeping your finger away from the trigger and the trigger guard.
- Pull the slide fully back then release it to go back to forward position If the slide is locked in the rearward position:
- Release the slide by pressing the slide stop lever and return it to the fully forward position or
- Grasp the rear of the slide at the serrations, pull it to the back full, and then release it to go back to the forward position.

“YOUR PISTOL IS NOW LOADED, COCKED, AND READY TO FIRE.”

WARNING:

DO NOT LOAD LIVE AMMUNITION INTO YOUR FIREARM UNTIL YOU ARE READY TO USE IT. KEEP THE MUZZLE POINTING IN A SAFE DIRECTION, WELL CLEAR OF YOUR BODY WHEN LOADING AND UNLOADING.

WARNING:

YOUR PISTOL MIGHT BE LOADED IF THE TRIGGER IS IN FORWARD POSITION. THE LOADED CHAMBER INDICATOR IS STILL A MECHANICAL DEVICE WHICH COULD STILL FAIL. DO NOT RELY SOLELY ON THIS OR ON YOUR MEMORY TO DECIDE IF YOUR PISTOL IS LOADED. ALWAYS CHECK FOR YOURSELF IF THE PISTOL IS LOADED. ALWAYS CHECK IF THE CHAMBER IS EMPTY EVEN IF THE MAGAZINE IS NOT IN YOUR PISTOL.

UNLOADING THE PISTOL

To ensure that the pistol is unloaded, follow this order:

1. Place your free hand under the magazine to catch it. Then, press the magazine catch to release the magazine.
2. Grasp the rear of the slide at the serrations and eject the cartridge that may be left in the chamber by sliding the slide fully back.
3. Push the slide stop lever to lock the slide in the rearward position. Check the chamber for an unextracted shell or unfired cartridge and remove such from the chamber.
4. Return the slide into the forward position by pressing the slide stop lever down or by pulling the slide fully back and then releasing it.
5. Pull the trigger while pointing the muzzle of your pistol in a safe direction.

“THE PISTOL IS NOW UNLOADED.”

15 | MAINTENANCE

DISASSEMBLY

PISTOL DISASSEMBLY

Always check your pistol if it is loaded before disassembly. Refer to “UNLOADING THE PISTOL” for the proper procedure of checking and unloading your pistol.

WARNING:

WEAR PROPER EYE PROTECTION WHEN DISASSEMBLING OR FIELD STRIPPING THE PISTOL. PARTS SUBJECTED TO PRESSURE (E.G. SPRINGS) MIGHT SHOOT OUT ABRUPTLY AND CAN CAUSE HARM OR INJURY.

To disassemble your pistol, follow these steps:

1. Pull back the slide by about 1/8 inch (3mm) and hold it.
 - Make sure that the trigger is depressed.
 - Note: Pulling it back too far will engage the trigger to its forward position. Press the trigger to depressed it while pointing the pistol in a safe direction.
2. Pull the slide lock down and hold it.
3. Release the slide by pushing it forward and off the frame.
4. To remove the recoil spring assembly, press it towards the front then pull it up to separate it from the slide.
5. Then afterward, the barrel can be removed from the slide.

SLIDE DISASSEMBLY

To disassemble the slide, perform these steps:

1. Push down the polymer spacer sleeve using a disassembly tool. Hold the sleeve down for the next step.
 - Note: Be careful in handling the extractor spring as this can shoot out of the slide.
2. Push the slide cover plate out of the slide while still holding the sleeve down. Remove the firing pin assembly and the extractor depressor plunger assembly.
 - Note: The firing pin assembly and the extra depressor plunger are both spring-loaded and can shoot out.
3. Press down and hold the firing pin safety (small, round, silver-colored button) located on the bottom of the slide.
4. Rotate the extractor out of the slide while keeping the firing pin safety depressed.
5. Remove the firing pin safety assembly.

WARNING:

REFRAIN FROM DISASSEMBLING THE FRAME ASSEMBLY. NON-COMPLIANCE WILL VOID YOUR WARRANTY

16 | MAINTENANCE

REASSEMBLY AND INSPECTION

PRE – REASSEMBLY INSPECTION

Before reassembling your pistol, conduct inspection on the following:

- Frame, barrel, and slide - Inspect for any signs of corrosion, cracks, bulges, or any visible damage.
- Firing pin and firing pin channel – Press the firing pin safety into the slide. The firing pin should move down and the tip should protrude from the breech face. While still holding the firing pin safety, shake the slide vigorously. The firing pin should move freely in the firing pin channel.
- Extractor – Ensure that the extractor claw is free from any damage.
- Ejector – Make sure that the ejector (housed together with the trigger mechanism housing) is intact and not damaged.
- Slide stop lever – Push the slide stop lever up and release it. The lever should snap back down to the frame. Contact the authorized personnel of the manufacturer for any abnormalities.
- Magazine – Check for any visible damage. Take note if there are any damaged feed lips or broken magazine followers. To check the magazine follower, press it down and release it. A good magazine follower will spring back and will not stick inside the magazine tube.

WARNING:

WEAR PROPER EYE PROTECTION WHEN DISASSEMBLING OR FIELD STRIPPING THE PISTOL. PARTS SUBJECTED TO PRESSURE (E.G. SPRINGS) MIGHT SHOOT OUT ABRUPTLY AND CAN CAUSE HARM OR INJURY.

SLIDE REASSEMBLY

Follow these steps to reassemble the slide of your pistol:

1. Place the firing pin safety assembly back to the slide. Press it down until the next step.
2. Either put the extractor depressor plunger assembly first back to the slide followed by the extractor or vice versa.
3. Insert the firing pin assembly. Ensure that the firing pin spring is properly seated.
4. Press down the firing pin assembly and put the slide cover plate.

Note: The firing pin assembly and the depressor plunger are both spring-loaded and can shoot out.

PISTOL REASSEMBLY

To completely reassemble your pistol, follow the instructions in order:

1. Insert the barrel into the slide.
2. Place the recoil spring assembly back to the slide by placing the small end into the indentation located in front of the slide.
3. Lock the recoil spring assembly in place by compressing the spring towards the front of the slide and resting the notch onto the barrel locking cams.
4. Place the slide onto the frame and push it towards the back of the frame until the slide lock snaps it into place.

POST – REASSEMBLY INSPECTION

After any disassembly and reassembly, it is very important to verify the function of your pistol and ensure it is properly working before any firing is attempted.

WARNING:

MAKE SURE THAT THERE IS NO CARTRIDGE LEFT IN THE CHAMBER AS YOU CONDUCT THE SUBSEQUENT CHECKING PROCEDURES. ALWAYS KEEP THE PISTOL POINTED IN A SAFE DIRECTION AS YOU PERFORM THE PROCEDURE.

17 | MAINTENANCE

CHECK THE TRIGGER SAFETY

Touch the sides of the trigger and try to pull it to the rear of the trigger guard. A functional trigger safety will hinder the trigger's rearward movement preventing the pistol to fire.

CHECK IF THE TRIGGER WILL RESET

1. Pull the trigger to the rear of the trigger guard. Notice the release of the firing pin.
2. Continue pulling the trigger down while pulling the slide to the rear then releasing the slide afterward.
3. Release the trigger and it should reset to its forward position.
4. Repeat this procedure several times.

CHECK IF THE SLIDE WILL LOCK-OPEN

Insert an empty magazine into your pistol. A well-functioning pistol will slide lock-open once the slide is pulled fully to the rear. Repeat this test several times.

CLEARING JAMS AND MALFUNCTIONS

WARNING:

WEAR SAFETY GLASS WHEN TRYING TO REMOVE A JAMMED CARTRIDGE TO ENSURE YOUR SAFETY. ALWAYS REMOVE THE MAGAZINE BEFORE CLEARING THE CHAMBER.

If the pistol experienced failure to fire:

- Point your pistol towards the target for at least 30 seconds. A hang fire or slow ignition should proceed within 30 seconds.
- If the pistol still did not fire after that 30 seconds, release the magazine and eject the cartridge from the chamber.
- Inspect the ammunition by checking its primer and the firing pin indentation. Your pistol should be checked by authorized personnel if there is a light or off-center indentation as well as if no indentation appeared on the primer. Your ammunition might be defective if the indentation appears to be normal.

If the pistol experienced jamming of the cartridge:

- Point your pistol in a safe direction.
- Remove the magazine by pressing the magazine catch.
- Pull the slide fully back and allow the cartridge to be ejected. If this fails, carefully remove the jammed cartridge using your finger while still holding the slide in its

WARNING:

DO NOT ATTEMPT TO FORCE AN UNFIRED CARTRIDGE (HANGED UP, JAMMED, OR BOUND WHILE BEING CHAMBERED) BY STRIKING THE SLIDE IN ORDER TO CLOSE IT. THIS COULD BURST OUT INTO FRAGMENTS AND COULD RESULT TO SERIOUS INJURY.

DO NOT USE A METAL TOOL TO REMOVE AN UNFIRED CARTRIDGE. THIS MAY IGNITE THE PRIMER AND CAUSE THE CARTRIDGE TO BE BROKEN INTO FRAGMENTS WHICH MAY SHOOT OUT AND CAN CAUSE SERIOUS INJURY OR EVEN DEATH.

MODIFICATIONS OR ALTERATIONS OF THE PISTOL OR USE OF OTHER ACCESSORIES NOT MANUFACTURED BY ARMSCOR MAY CAUSE MALFUNCTIONS.

18 | MAINTENANCE

MINIMIZING JAMS AND MALFUNCTIONS

Occasional jams and malfunctions can be experienced while using your pistol. Improper ammunition, improper grip while shooting, improper lubrication, and a damaged magazine are some of the reasons for a malfunction to occur. To minimize jams/malfunctions:

- Use only the factory ammunition of correct caliber (9MM)
- Clean thoroughly the pistol. Ensure that the grease and dirt are properly removed. Refer to "CLEANING THE PISTOL" for the proper procedure.
- Disassemble your pistol as per the "DISASSEMBLY" section. Inspect the parts as per "PRE-REASSEMBLY INSPECTION" to check for any damage to the parts mentioned in the section.

CARE AND MAINTENANCE

With proper care, your pistol will provide you years of dependable service. The pistol should be inspected, cleaned, and oiled periodically to ensure safe and reliable usage of the pistol.

CLEANING THE PISTOL

- Before cleaning your pistol, you need the following materials:
- Cleaning patch and clean dry cloth
- Bristled cleaning brush and bore brush
- Cleaning rod
- Cleaning solvent

Disassemble your pistol before cleaning. Refer to "UNLOADING THE PISTOL" to ensure that your pistol is unloaded. Proceed to "DISASSEMBLY" for proper disassembly procedure.

1. Use a bore brush dipped in a gun cleaning solvent to scrub the barrel bore and chamber and remove all lead residues.
2. Clean the slide's breech face area. Use a bristled cleaning brush with cleaning solvent to remove residue from powder and primers. Also clean the insides of the slide and barrel locking lugs, frame and slide rails, extractor, and firing pin by wiping using the cleaning patch and brushing it.
3. After brushing, clean up using a clean dry cloth. Wipe all parts and surfaces with cleaning solvent.
4. Immediately apply some gun oil to preserve and lubricate the moving parts.
5. Clean thoroughly and wipe dry the oiled surface. Check all functions before loading.

Refer to the "INSPECTION" for the proper checking of the functions.

Clean and lubricate your pistol as indicated below:

- After every firing
- When it is brand new prior to its first-time firing
- At least once a year
- As required

WARNING:

THE GUN SHOULD BE STORED IN ROOMS WITH DRY ATMOSPHERE AND WITH THE LEAST HUMIDITY. IT SHOULD NOT BE STORED ENCASED IN LEATHER OR ANYTHING THAT WILL ATTRACT AND HOLD MOISTURE CAUSING THE METAL PARTS TO RUST.

STORAGE AND TRANSPORTATION

Store your firearm in very dry conditions with very low humidity. Avoid leather as this holds moisture. Oil-coated plastic bags are better. For the ammunition, store it in a cool, dry location.

If you are going to store your firearm for an indefinite period, apply a thicker film of oil with a lubricant that is acid-free. Moisture and humidity are factors that cause rust and corrosion. Before use, make sure that your pistol is cleaned and wiped dry.

WARNING:

CHILDREN ARE ATTRACTED TO AND CAN OPERATE FIREARMS THAT CAN CAUSE SEVERE INJURIES OR DEATH. PREVENT CHILD ACCESS BY ALWAYS KEEPING FIREARMS LOCKED AWAY AND UNLOADED WHEN NOT IN USE. IF YOU KEEP A LOADED FIREARM WHERE A CHILD OBTAINS AND IMPROPERLY USES IT, YOU MAY BE FINED OR SENT TO PRISON.

WARNING:

THE FIREARM SHOULD BE RE-STORED IN ROOMS WITH A DRY ATMOSPHERE AND WITH THE LEAST HUMIDITY. IT SHOULD NOT BE STORED ENCASED IN LEATHER OR ANYTHING THAT WILL ATTRACT AND HOLD MOISTURE, CAUSING IT TO RUST.

ORDERING PARTS

Contact your nearest ARMSCOR Shooting Center/ ARMSCOR Repair & Maintenance Center conveniently located in all 3 major island groups of the Philippines

Armcor Shooting Center, Inc. Marikina

Address: Armcor Ave., Barangay Fortune, Marikina City

Telephone No. : (02) 8941-5545 / (02) 8941-7328

Armcor Services Center, Inc.

Address: 4th fl. Krame-E Arcade 107 Bonny Serrano Ave., Brgy. Bagong Lipunan, Quezon City

Telephone No. : (02) 8535-9610 / (02) 8534-7468

Armcor Shooting Center, Inc. Makati

Address: 1st Basement, Makati Cinema Square, Chino Roces Ave., Makati City

Telephone No. : (02) 8811-1264 / (02) 8811-1551

Armcor Shooting Center, Inc. Tarlac

Address: MacArthur Highway, Barangay Dolores, Capas, Tarlac

Telephone No. : (045) 925-7297

Armcor Shooting Center, Inc. La Union

Address: Parammata Compound, Diversion Road, Sitio 5, Barangay Biday, San Fernando City, La Union

Telephone No. : (072) 607-1287

Armcor Shooting Center, Inc. Cebu

Address: Suite 101 Centro Maximo Building D. Jakosalem St., Cebu City

Telephone No. : (+63 32) 253-0531 / (+63 32) 412-6225 / (032)254-5964

Armcor Shooting Center, Inc. Davao

Address: Purok 9, Garcia Highway, Barangay Communal, Buhangin District, Davao City

Telephone No. : (+63 82) 287-5577 / (082) 221-0300

WARRANTY REGISTRATION

Armcor's warranty covers its firearms and parts. We offer limited lifetime warranty on our products for their intended purpose. As with any product, abuse, gunsmithing by an unqualified person and normal wear and tear are excluded. Additionally, if the firearm was modified and/or repaired by an unqualified gunsmith without permission from Armcor, then the warranty will be void. If warranty work should be required, return the firearm to the address listed below. There is no refund for the shipping cost. Gunsmithing services are available by registered Armcor Gunsmithers. Please email the address below.

To register your firearm, please go to www.rockislandarmory.com/support-center/warranty/ and complete online warranty form. In comments section, write warranty registration and press submit. You can also go to www.rockislandarmory.com and press warranty section at the bottom.

For more information on warranty, visit www.rockislandarmory.com, or email support@armcor.com

Armcor Precision International
150 North Smart Way
Pahrump, NV 89060
Email: support@armcor.com

IMPORTANT WARRANTY INFORMATION

Our Rock Island Armory 1911 Pistols are warranted to function only with Factory FMJ Brass Cased Ammo and the Original Factory Magazine. Use of Handloads is not covered in Warranty of Repair for the function of the Firearm.

DUE TO THE FIT AND TIGHTNESS OF FIREARM, RIA RECOMMENDS A BREAK-IN PERIOD OF 500 ROUNDS.

THIS IS HOW YOU VOID YOUR WARRANTY

- * Refinishing your RIA firearm
- * Misuse, Mishandling, Dropping your RIA Firearm
- * Firing Remanufactured or Reloaded Ammunition
- * Not properly reassembling your RIA Firearm resulting in damage, ie reverse plugs!
- * Any addition of after market parts
- * Unauthorized repairs done by any other than Rock Island Armory

LIMITS ON WARRANTY (will not cover)

- * Finish, Holster wear, Scratches, Chemical damage
- * After Market Magazines
- * Damage to Factory Magazines
- * Sights not installed by Rock Island Armory
- * Recoil Springs

WE RESERVE THE RIGHT TO CHARGE FOR LABOR, PARTS AND SHIPPING TO RETURN YOUR RIA FIREARM BACK TO FACTORY SPECIFICATIONS IF IT HAS BEEN ALTERED.

NOTES

NOTES

NOTES



WWW.ROCKISLANDARMORY.COM